



MATERIAL HANDLING SOLUTIONS

Logistics Solutions

Dock Seals

Dock Bumpers

Ramps

Dock Plates

Pallet Trucks

Jacks

Dock Levelers

Pallets

Stackers

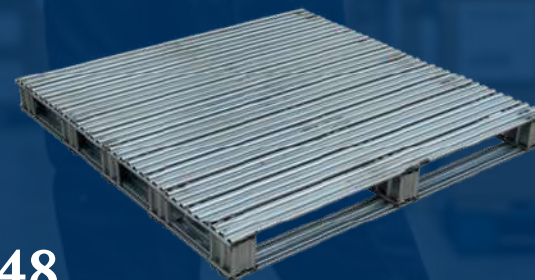


Pallets



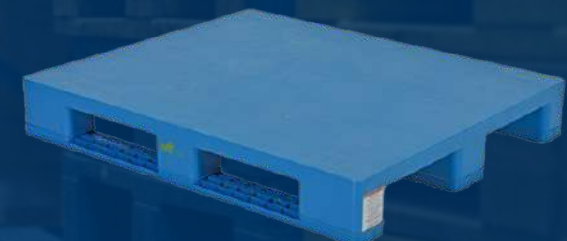
PLP4-4840-BLUE

- Dimensions: 48" x 40" x 6"
- Static Capacity: 7,054 lbs
- Dynamic Capacity: 3,858 lbs



SPL-4848

- Dimensions: 48" x 48" x 4-3/4"
- Static Capacity: 8,000 lbs
- Dynamic Capacity: 4,000 lbs



PLPS-H

- Dimensions: 39-1/4" x 47-1/8" x 6-1/2"
- Static Capacity: 8,800 lbs
- Dynamic Capacity: 3,300 lbs

Cargo Restraints



STRAP-12-RE

- Load Limit: 1,500 lbs
- Working Length: 144"
- Strap Width: 2"



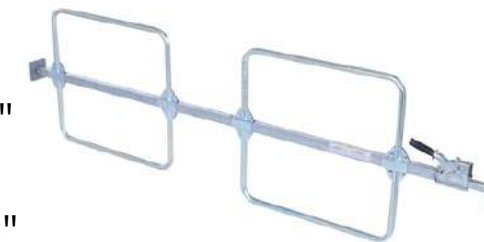
STRAP-30

- Load Limit: 5,400 lbs
- Strap Length: 30 ft.
- Winch Strap



CL-H3-15

- Overall Length: 119"
- Overall Width: 3.75"
- Overall Height: 24.5"



Pallet Trucks

EPT-2048-45

- Fork Width: 20.5"
- Fork Length: 48"
- Capacity: 4,500 lbs



PMC-EPT-2745

- Fork Width: 6.5"
- Fork Length: 45"
- Capacity: 2,500 lbs



PM5-2748-QL

- Length: 61-11/16"
- Fork Width: 27"
- Capacity: 5,500 lbs



EPT-CFR-2748-40

- Fork Width: 20"
- Fork Length: 45"
- Capacity: 3,500 lbs



Stackers

Stackers are ideal for lifting and stacking pallets in logistics environments. They offer a cost-effective, space-saving alternative to forklifts for material handling tasks.



S-62-AA

- Lift Height Range: 2" to 118"
- Capacity (0-62"): 2,000 lbs
- Capacity (62-118"): 1,000 lbs
- Powered Drive and Lift



SL-118-AA

- Max Lift Height: 118"
- Capacity (0-63"): 2,000 lbs
- Capacity (63-118"): 1,500 lbs
- Powered Lift



S3-125-AA

- Lift Height Range: 2" to 63"
- Capacity: 2,000 lbs
- Operation: Hand pump
- Manual



Dockplates

AMPS Supply's Dockplates and Dockboards ensure safe, efficient loading and unloading. Built for heavy-duty use, they provide a stable bridge between surfaces to reduce risks and keep operations running smoothly.



TAS-10-6048

- Capacity: 10,000 lbs
- Bend Degree: 11
- Usable Width: 56"



E-3024

- Capacity: 3,000 lbs
- Bend Degree: 11
- Usable Width: 30"

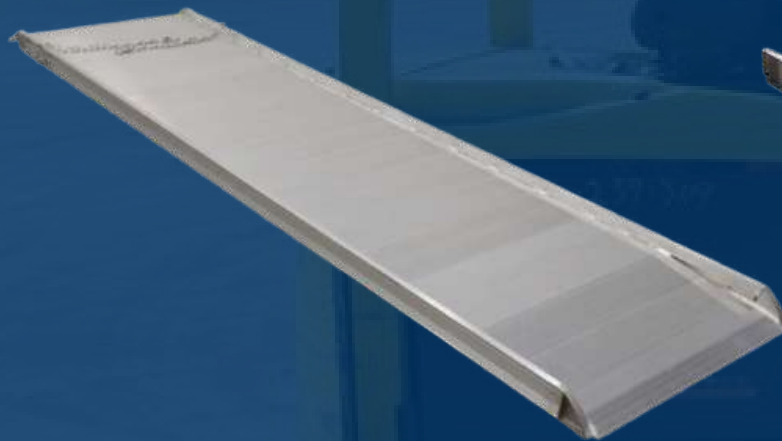


TS-10-6030

- Capacity: 10,000 lbs
- Bend Degree: 11
- Steel Strength: 55,000 psi

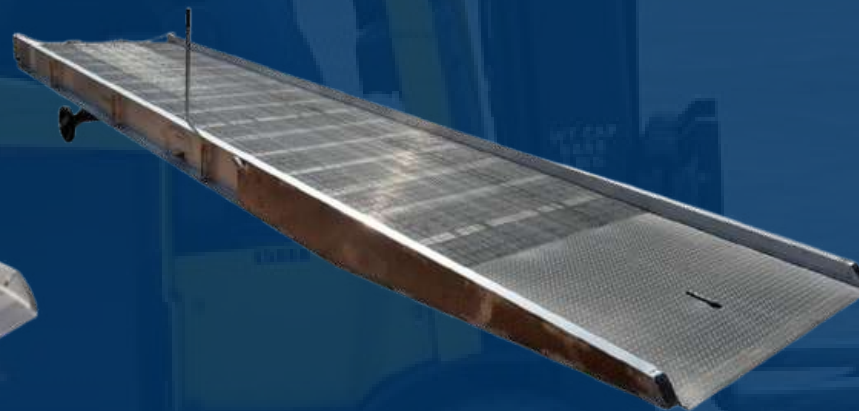
Ramps

AMPS Supply's Ramps provide safe, slip-resistant access between trucks, trailers, and docks — ensuring smooth movement and efficient operations.



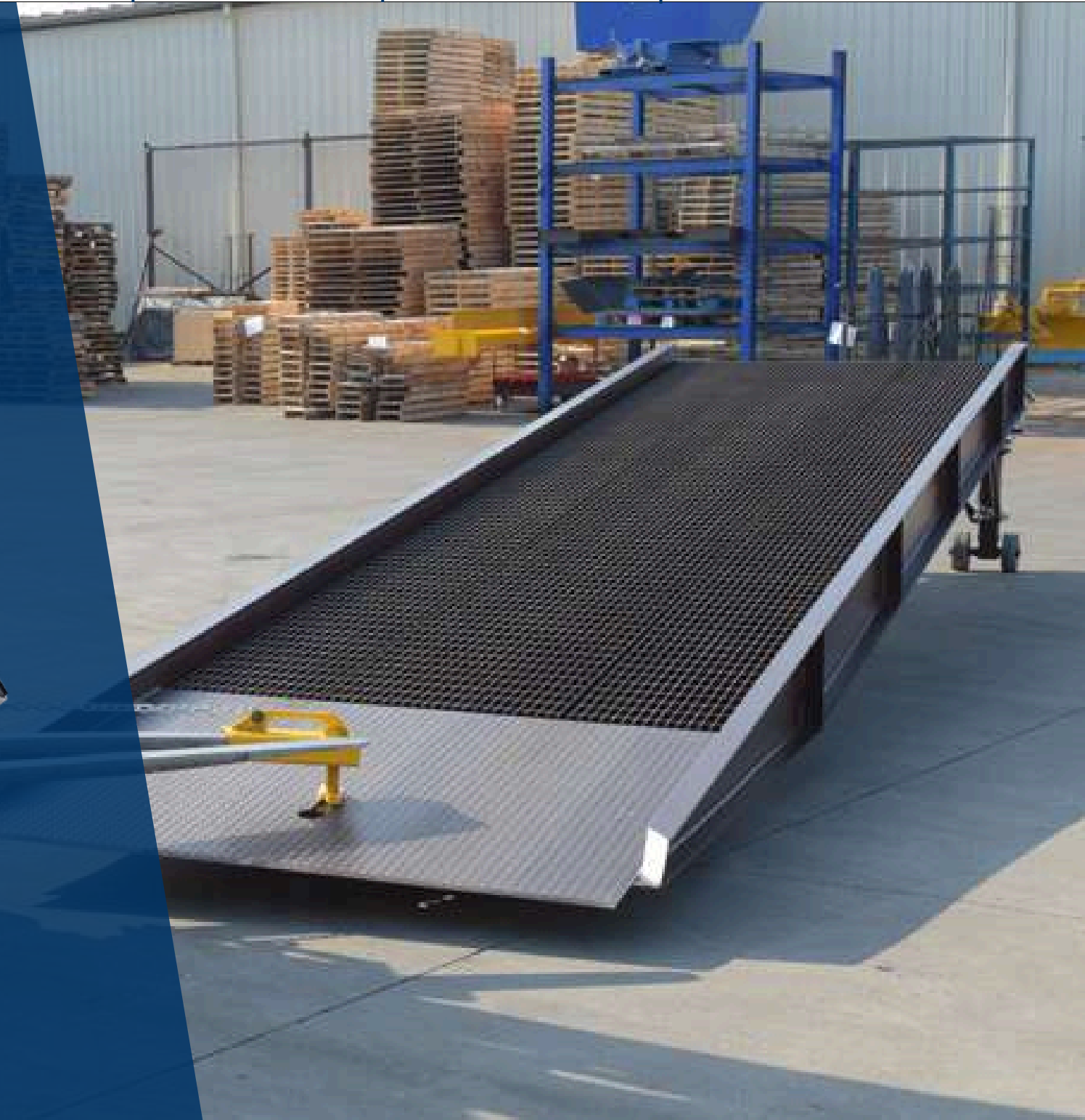
AWR-38-12A

- Capacity: 1,900 lbs



AY-167230

- Capacity: 16,000 lbs



Dock Seals & Shelters

AMPS Supply's Vestil Dock Seals & Shelters protect loading areas from weather and hazards, improving safety and energy efficiency for smoother operations.



D-750-24

- Projection: 24"
- Long Fabric: 40 oz
- Header Width: 132"



D-350-20

- Projection: 20"
- Nylon-Vinyl: 36 oz
- Top Flap Height: 12"



D-150/650-10

- Projection: 10"
- Header Width: 114"
- Header Height: 4"

Trailer Jacks

AMPS Supply's Trailer Stabilizing jacks provide strong, reliable support for safe loading, unloading, and transit. Built for durability, they simplify stabilization and reduce downtime in demanding environments.



CJ-BEAM-SN

- Static Capacity: 100,000 lbs
- Lifting Capacity: 50,000 lbs
- Raised Height: 55"



H-LO-J-BEAM

- Static Capacity: 100,000 lbs
- Lifting Capacity: 40,000 lbs
- Raised Height: 47"



SJ-35

- Static Capacity: 50,000 lbs
- Lifting Capacity: 5,000 lbs
- Raised Height: 51"



Dock Levelers & Lifts



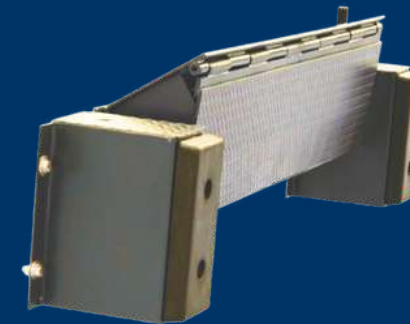
RR-68-20

- Capacity: 20,000 lbs
- Pit Size: 74" W x 86" L x 24" D
- Deck Thickness: 1/4"



WL-100-10-610

- Capacity: 10,000 lbs
- Platform Size: 6' x 10'
- Frame Width: 62"



FM-2072

- Capacity: 20,000 lbs
- Bumper Width: 8"
- Bumper Height: 18"

Dock Bumpers



V-1136-6

- Rubber Height: 36"
- Rubber Width: 7.25"
- Rubber Projection: 6"



M-2-12

- Durometer: (+/-5) 70
- Hole Quantity: 2
- Hole Diameter: 0.5"



BS-24

- Solid rubber
- Flat Head Anchor Bolt Quantity: 2
- Flat Head Anchor Bolt Diameter: 3/8"





MATERIAL HANDLING SOLUTIONS

Empowering Businesses with Reliable and Efficient Material Handling Solutions for Every Industry.

 **260.243.0591**

 **habibullah@ampssupply.com**

 **www.ampssupply.com**